

A close-up portrait of a woman with short, dark hair and bangs. She is looking slightly to the right of the camera with a neutral expression. She is wearing several pieces of jewelry: pearl earrings, pearl rings on her fingers, and a pearl necklace. The background is a textured, light-colored wall. The text 'ANIA HAE' is overlaid at the bottom of the image in a large, white, sans-serif font.

ANIA HAE

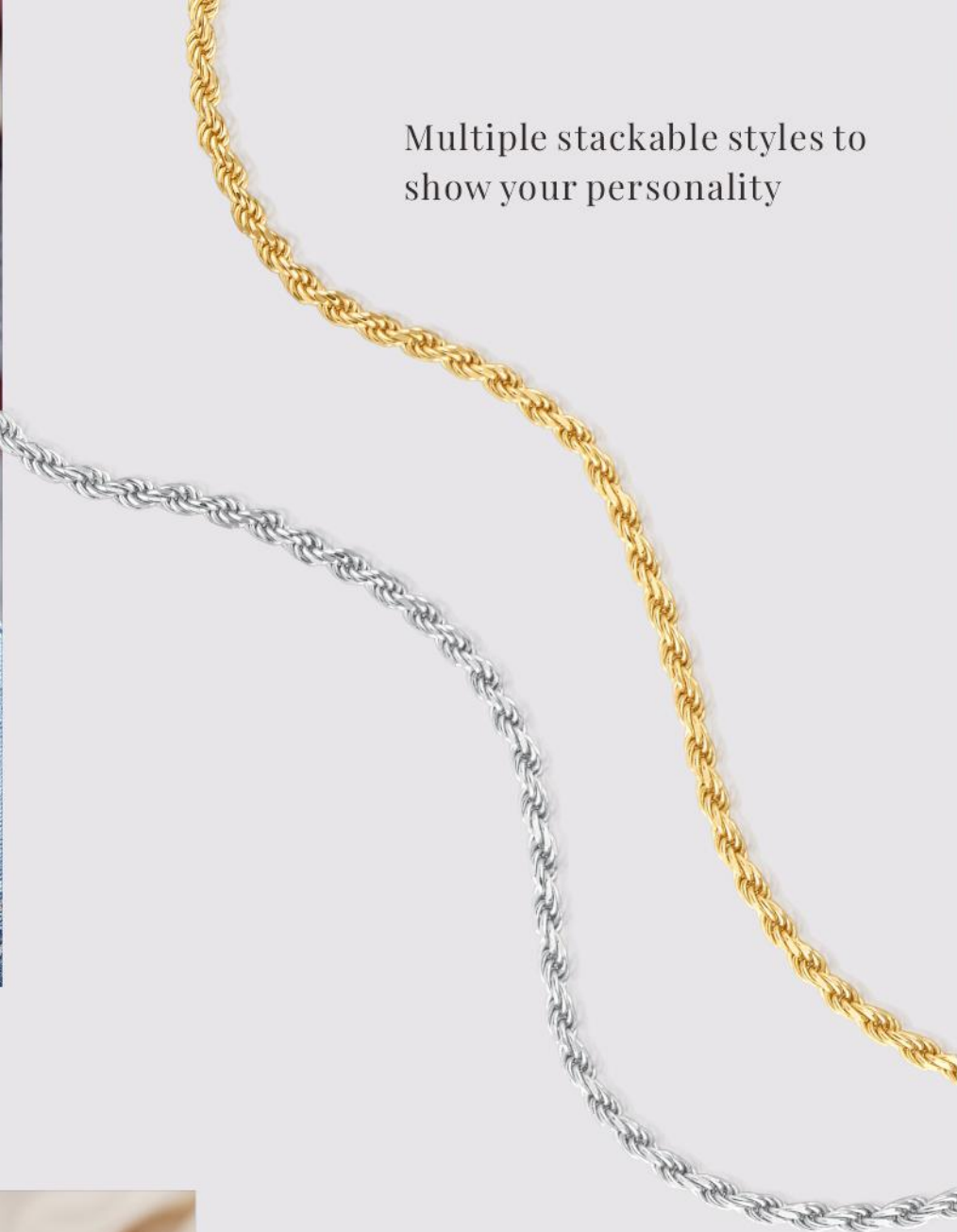
CHIC CREATOR



Our collection of CHIC CREATOR offers a new interpretation of pearl jewellery, designed to provide contemporary women with unique fashion jewellery sets that demonstrate confidence and chic style from the inside out.

CHIC STYLE





Multiple stackable styles to show your personality



Slider for free adjustment





CLEAN CUT





Make life your own journey
Making every commute in style and elegance

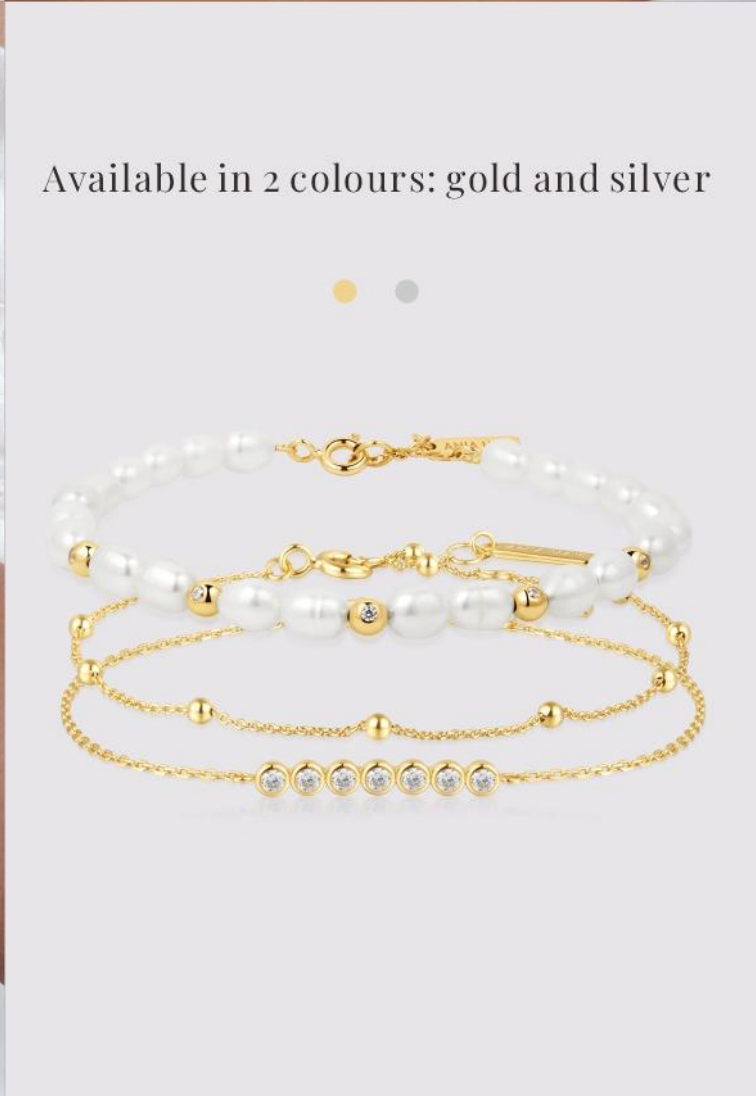




Delight in every moment of life with
exquisite details



YOUR TIME TO SHINE

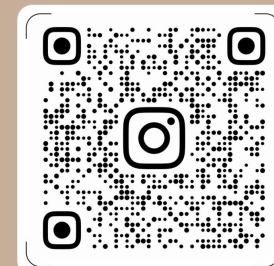


Available in 2 colours: gold and silver

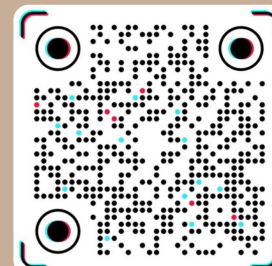




ANIA HAIE |    



 Instagram



 TikTok

<https://www.aniahaie.com/>